

and comparison to these approximate representations. This is true even for monolingual adults and young children who never learned any formal arithmetic. These data add to previous evidence that numerical approximation is a basic competence, independent of language, and available even to preverbal infants and many animal species (6, 13–16). We conclude that sophisticated numerical competence can be present in the absence of a well-developed lexicon of number words. This provides an important qualification of Gordon’s (23) version of Whorf’s hypothesis according to which the lexicon of number words drastically limits the ability to entertain abstract number concepts.

What the Mundurukú appear to lack, however, is a procedure for fast apprehension of exact numbers beyond 3 or 4. Our results thus support the hypothesis that language plays a special role in the emergence of exact arithmetic during child development (9–11). What is the mechanism for this developmental change? It is noteworthy that the Mundurukú have number names up to 5, and yet use them approximately in naming. Thus, the availability of number names, in itself, may not suffice to promote a mental representation of exact number. More crucial, perhaps, is that the Mundurukú do not have a counting routine. Although some have a rudimentary ability to count on their fingers, it is rarely used. By requiring an exact one-to-one pairing of objects with the sequence of numerals, counting may promote a conceptual integration of approximate number representations, discrete object representations, and the verbal code (10, 11). Around the age of 3, Western children exhibit an abrupt change in number processing as they suddenly realize that each count word refers to a precise quantity (9). This “crystallization” of discrete numbers out of an initially approximate continuum of numerical magnitudes does not seem to occur in the Mundurukú.

References and Notes

1. J. R. Hurford, *Language and Number* (Blackwell, Oxford, 1987).
2. N. Chomsky, *Language and the Problems of Knowledge* (MIT Press, Cambridge, MA, 1988), p. 169.
3. S. Dehaene, *The Number Sense* (Oxford Univ. Press, New York, 1997).
4. C. R. Gallistel, R. Gelman, *Cognition* **44**, 43 (1992).
5. S. Dehaene, G. Dehaene-Lambertz, L. Cohen, *Trends Neurosci.* **21**, 355 (1998).
6. L. Feigenson, S. Dehaene, E. Spelke, *Trends Cognit. Sci.* **8**, 307 (2004).
7. P. Bloom, *How Children Learn the Meanings of Words* (MIT Press, Cambridge, MA, 2000).
8. H. Wiese, *Numbers, Language, and the Human Mind* (Cambridge Univ. Press, Cambridge, 2003).
9. K. Wynn, *Cognition* **36**, 155 (1990).
10. S. Carey, *Science* **282**, 641 (1998).
11. E. Spelke, S. Tsivkin, in *Language Acquisition and Conceptual Development*, M. Bowerman, S. C. Levinson, Eds. (Cambridge Univ. Press, Cambridge, 2001), pp. 70–100.
12. S. Dehaene, E. Spelke, P. Pineda, R. Stanescu, S. Tsivkin, *Science* **284**, 970 (1999).
13. K. Wynn, *Nature* **358**, 749 (1992).

14. G. M. Sulkowski, M. D. Hauser, *Cognition* **79**, 239 (2001).
15. A. Nieder, E. K. Miller, *Proc. Natl. Acad. Sci. U.S.A.* **101**, 7457 (2004).
16. E. M. Brannon, H. S. Terrace, *J. Exp. Psychol. Anim. Behav. Processes* **26**, 31 (2000).
17. E. S. Spelke, S. Tsivkin, *Cognition* **78**, 45 (2001).
18. C. Lemer, S. Dehaene, E. Spelke, L. Cohen, *Neuropsychologia* **41**, 1942 (2003).
19. S. Dehaene, L. Cohen, *Neuropsychologia* **29**, 1045 (1991).
20. H. Barth, N. Kanwisher, E. Spelke, *Cognition* **86**, 201 (2003).
21. J. Whalen, C. R. Gallistel, R. Gelman, *Psychol. Sci.* **10**, 130 (1999).
22. B. Butterworth, *The Mathematical Brain* (Macmillan, London, 1999).
23. P. Gordon, *Science* **306**, 496 (2004); published online 19 August 2004 (10.1126/science.1094492).
24. C. Strömer, *Die Sprache der Mundurukú* (Verlag der Internationalen Zeitschrift “Anthropos,” Vienna, 1932).
25. M. Crofts, *Aspectos da língua Mundurukú* (Summer Institute of Linguistics, Brasília, 1985).
26. See supporting data on Science Online.
27. T. Pollmann, C. Jansen, *Cognition* **59**, 219 (1996).
28. R. S. Moyer, T. K. Landauer, *Nature* **215**, 1519 (1967).
29. P. B. Buckley, C. B. Gillman, *J. Exp. Psychol.* **103**, 1131 (1974).
30. Comparison performance remained far above chance in two independent sets of trials where the two sets were equalized either on intensive parameters (such as dot size) or on extensive parameters (such as total luminance) [see (26)]. Thus, subjects did not base their responses on a single non-numerical parameter. Performance was, however, worse for extensive-matched pairs (88.3% versus 76.3% correct, $P < 0.0001$). We do not know the origins of this effect, but it is likely that, like Western subjects, the Mundurukú estimate number via some simple relation such as the total occupied screen area divided by the average space around the items, which can be subject to various biases [see (32)].
31. Performance remained above chance for both intensive-matched and extensive-matched sets (89.5 and 81.8%

correct, respectively; both $P < 0.0001$). Although the difference between stimulus sets was again significant ($P < 0.0001$), it was identical in Mundurukú and French subjects. Furthermore, performance was significantly above chance for a vast majority of items (44/51) and was never significantly below chance, making it unlikely that participants were using a simple shortcut other than mental addition. For instance, they did not merely compare $n1$ with $n3$ or $n2$ with $n3$, because when $n1$ and $n2$ were both smaller than $n3$, they still discerned accurately whether their sum was larger or smaller than the proposed number $n3$, even when both differed by only 30% (76.3 and 67.4% correct, respectively; both $P < 0.005$).

32. J. Allik, T. Tuulmets, *Percept. Psychophys.* **49**, 303 (1991).

33. This work was developed as part of a larger project on the nature of quantification and functional categories developed jointly with the linguistic section of the Department of Anthropology of the National Museum of Rio de Janeiro and the Unité Mixte de Recherche 7023 of the CNRS, with the agreement of Fundação Nacional do Índio (FUNAI) and Conselho Nacional de Desenvolvimento Científico e Tecnológico (CNPQ) of Brazil. It was supported by INSERM, CNRS, the French Ministry of Foreign Affairs (P.P.), and a McDonnell Foundation centennial fellowship (S.D.). We thank E. Spelke and M. Piazza for discussions, A. Ramos for constant advice, and V. Poxão, C. Tawé, and F. de Assis for help in testing. Movies illustrating the difficulty of counting for the Mundurukú can be viewed at <http://video.rap.prd.fr/videotheques/cnrs/grci.html>.

Supporting Online Material
www.sciencemag.org/cgi/content/full/306/5695/499/DC1
 Materials and Methods
 References
 Documentary Photos
 Movie S1

28 June 2004; accepted 3 September 2004

Separate Neural Systems Value Immediate and Delayed Monetary Rewards

Samuel M. McClure,^{1*} David I. Laibson,² George Loewenstein,³ Jonathan D. Cohen^{1,4}

When humans are offered the choice between rewards available at different points in time, the relative values of the options are discounted according to their expected delays until delivery. Using functional magnetic resonance imaging, we examined the neural correlates of time discounting while subjects made a series of choices between monetary reward options that varied by delay to delivery. We demonstrate that two separate systems are involved in such decisions. Parts of the limbic system associated with the midbrain dopamine system, including paralimbic cortex, are preferentially activated by decisions involving immediately available rewards. In contrast, regions of the lateral prefrontal cortex and posterior parietal cortex are engaged uniformly by intertemporal choices irrespective of delay. Furthermore, the relative engagement of the two systems is directly associated with subjects’ choices, with greater relative fronto-parietal activity when subjects choose longer term options.

In Aesop’s classic fable, the ant and the grasshopper are used to illustrate two familiar, but disparate, approaches to human inter-

temporal decision making. The grasshopper luxuriates during a warm summer day, inattentive to the future. The ant, in contrast,

stores food for the upcoming winter. Human decision makers seem to be torn between an impulse to act like the indulgent grasshopper and an awareness that the patient ant often gets ahead in the long run. An active line of research in both psychology and economics has explored this tension. This research is unified by the idea that consumers behave impatiently today but prefer/plan to act patiently in the future (1, 2). For example, someone offered the choice between \$10 today and \$11 tomorrow might be tempted to choose the immediate option. However, if asked today to choose between \$10 in a year and \$11 in a year and a day, the same person is likely to prefer the slightly delayed but larger amount.

Economists and psychologists have theorized about the underlying cause of these dynamically inconsistent choices. It is well accepted that rationality entails treating each moment of delay equally, thereby discounting according to an exponential function (1–3). Impulsive preference reversals are believed to be indicative of disproportionate valuation of rewards available in the immediate future (4–6). Some authors have argued that such dynamic inconsistency in preference is driven by a single decision-making system that generates the temporal inconsistency (7–9), while other authors have argued that the inconsistency is driven by an interaction between two different decision-making systems (5, 10, 11). We hypothesize that the discrepancy between short-run and long-run preferences reflects the differential activation of distinguishable neural systems. Specifically, we hypothesize that short-run impatience is driven by the limbic system, which responds preferentially to immediate rewards and is less sensitive to the value of future rewards, whereas long-run patience is mediated by the lateral prefrontal cortex and associated structures, which are able to evaluate trade-offs between abstract rewards, including rewards in the more distant future.

A variety of hints in the literature suggest that this might be the case. First, there is the large discrepancy between time discounting in humans and in other species (12, 13). Humans routinely trade off immediate costs/benefits against costs/benefits that are delayed by as much as decades. In contrast, even the most advanced primates, which differ from humans dramatically in the size of

their prefrontal cortexes, have not been observed to engage in unpreprogrammed delay of gratification involving more than a few minutes (12, 13). Although some animal behavior appears to weigh trade-offs over longer horizons (e.g., seasonal food storage), such behavior appears invariably to be stereotyped and instinctive, and hence unlike the generalizable nature of human planning. Second, studies of brain damage caused by surgery, accidents, or strokes consistently point to the conclusion that prefrontal damage often leads to behavior that is more heavily influenced by the availability of immediate rewards, as well as failures in the ability to plan (14, 15). Third, a “quasi-hyperbolic” time-discounting function (16) that splices together two different discounting functions—one that distinguishes sharply between present and future and another that discounts exponentially and more shallowly—has been found to provide a good fit to experimental data and to shed light on a wide range of behaviors, such as retirement saving, credit-card borrowing, and procrastination (17, 18). However, despite these and many other hints that time discounting may result from distinct processes, little research to date has attempted to directly identify the source of the tension between short-run and long-run preferences.

The quasi-hyperbolic time-discounting function—sometimes referred to as beta-delta

preference—was first proposed by Phelps and Pollack (19) to model the planning of wealth transfers across generations and applied to the individual’s time scale by Elster (20) and Laibson (16). It posits that the present discounted value of a reward of value u received at delay t is equal to u for $t = 0$ and to $\beta\delta^t u$ for $t > 0$, where $0 < \beta \leq 1$ and $\delta \leq 1$. The β parameter (actually its inverse) represents the special value placed on immediate rewards relative to rewards received at any other point in time. When $\beta < 1$, all future rewards are uniformly downweighted relative to immediate rewards. The δ parameter is simply the discount rate in the standard exponential formula, which treats a given delay equivalently regardless of when it occurs.

Our key hypothesis is that the pattern of behavior that these two parameters summarize— β , which reflects the special weight placed on outcomes that are immediate, and δ , which reflects a more consistent weighting of time periods—stems from the joint influence of distinct neural processes, with β mediated by limbic structures and δ by the lateral prefrontal cortex and associated structures supporting higher cognitive functions.

To test this hypothesis, we measured the brain activity of participants as they made a series of intertemporal choices between early monetary rewards ($\$R$ available at delay d) and later monetary rewards ($\$R'$ available at

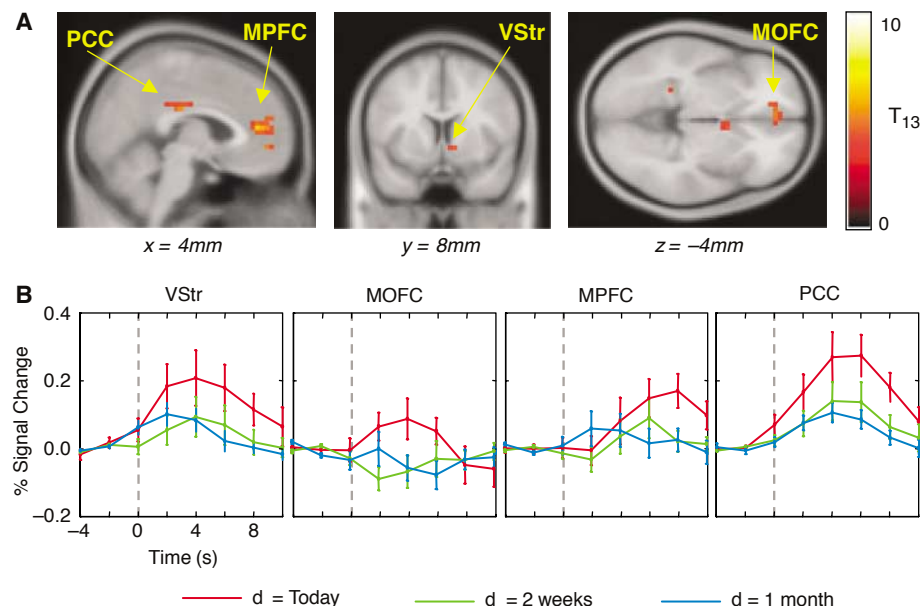


Fig. 1. Brain regions that are preferentially activated for choices in which money is available immediately (β areas). (A) A random effects general linear model analysis revealed five regions that are significantly more activated by choices with immediate rewards, implying $d = 0$ (at $P < 0.001$, uncorrected; five contiguous voxels). These regions include the ventral striatum (VStr), medial orbitofrontal cortex (MOFC), medial prefrontal cortex (MPFC), posterior cingulate cortex (PCC), and left posterior hippocampus (table S1). (B) Mean event-related time courses of β areas (dashed line indicates the time of choice; error bars are SEM; $n = 14$ subjects). BOLD signal changes in the VStr, MOFC, MPFC, and PCC are all significantly greater when choices involve money available today ($d = 0$, red traces) versus when the earliest choice can be obtained only after a 2-week or 1-month delay ($d = 2$ weeks and $d = 1$ month, green and blue traces, respectively).

¹Department of Psychology and Center for the Study of Brain, Mind, and Behavior, Princeton University, Princeton, NJ 08544, USA. ²Department of Economics, Harvard University, and National Bureau of Economic Research, Cambridge, MA 02138, USA. ³Department of Social and Decision Sciences, Carnegie Mellon University, Pittsburgh, PA 15213, USA. ⁴Department of Psychiatry, University of Pittsburgh, Pittsburgh, PA 15260, USA.

*To whom correspondence should be addressed. E-mail: smclure@princeton.edu

delay d' ; $d' > d$). The early option always had a lower (undiscounted) value than the later option (i.e., $\$R < \R'). The two options were separated by a minimum time delay of 2 weeks. In some choice pairs, the early option was available “immediately” (i.e., at the end of the scanning session; $d = 0$). In other choice pairs, even the early option was available only after a delay ($d > 0$).

Our hypotheses led us to make three critical predictions: (i) choice pairs that include a reward today (i.e., $d = 0$) will preferentially engage limbic structures relative to choice pairs that do not include a reward today (i.e., $d > 0$); (ii) lateral prefrontal areas will exhibit similar activity for all choices, as compared with rest, irrespective of reward delay; (iii) trials in which the later reward is selected will be associated with relatively higher levels of lateral prefrontal activation, reflecting the ability of this system to value greater rewards even when they are delayed.

Participants made a series of binary choices between smaller/earlier and larger/later money amounts while their brains were scanned using functional magnetic resonance imaging. The specific amounts (ranging from \$5 to \$40) and times of availability (ranging from the day of the experiment to 6 weeks later) were varied across choices. At the end of the experiment, one of the participant's choices was randomly selected to count; that is, they received one of the rewards they had selected at the designated time of delivery.

To test our hypotheses, we estimated a general linear model (GLM) using standard regression techniques (21). We included two primary regressors in the model, one that modeled decision epochs with an immediacy option in the choice set (the “immediacy” variable) and another that modeled all decision epochs (the “all decisions” variable).

We defined β areas as voxels that loaded on the “immediacy” variable. These are preferentially activated by experimental choices that included an option for a reward today ($d = 0$) as compared with choices involving only delayed outcomes ($d > 0$). As shown in Fig. 1, brain areas disproportionately activated by choices involving an immediate outcome (β areas) include the ventral striatum, medial orbitofrontal cortex, and medial prefrontal cortex. As predicted, these are classic limbic structures and closely associated paralimbic cortical projections. These areas are all also heavily innervated by the midbrain dopamine system and have been shown to be responsive to reward expectation and delivery by the use of direct neuronal recordings in nonhuman species (22–24) and brain-imaging techniques in humans (25–27) (Fig. 1). The time courses of activity for these areas are shown in Fig. 1B (28, 29).

We considered voxels that loaded on the “all decisions” variable in our GLM to be candidate δ areas. These were activated by all decision epochs and were not preferen-

tially activated by experimental choices that included an option for a reward today. This criterion identified several areas (Fig. 2), some of which are consistent with our predictions about the δ system (such as lateral prefrontal cortex). However, others (including primary visual and motor cortices) more likely reflect nonspecific aspects of task performance engaged during the decision-making epoch, such as visual processing and motor response. Therefore, we carried out an additional analysis designed to identify areas among these candidate δ regions that were more specifically associated with the decision process.

Specifically, we examined the relationship of activity to decision difficulty, under the assumption that areas involved in decision making would be engaged to a greater degree (and therefore exhibit greater activity) by more difficult decisions (30). As expected, the areas of activity observed in visual, premotor, and supplementary motor cortex were not influenced by difficulty, consistent with their role in non-decision-related processes. In contrast, all of the other regions in prefrontal and parietal cortex identified in our initial screen for δ areas showed a significant effect of difficulty, with greater activity associated with more difficult decisions (Fig. 3) (31). These findings are consistent with a large number of neurophysiological and neuroimaging studies that have implicated these areas in higher level cognitive functions (32, 33). Furthermore, the areas identified in inferior parietal cortex are similar to those that have been implicated in numerical processing, both in humans and in nonhuman species (34). Therefore, our findings are consistent with the hypothesis that lateral prefrontal (and associated parietal) areas are activated by all types of intertemporal choices, not just by those involving immediate rewards.

If this hypothesis is correct, then it makes an additional strong prediction: For choices between immediate and delayed outcomes ($d = 0$), decisions should be determined by the relative activation of the β and δ systems (35). More specifically, we assume that when the β system is engaged, it almost always favors the earlier option. Therefore, choices for the later option should reflect a greater influence of the δ system. This implies that choices for the later option should be associated with greater activity in the δ system than in the β system. To test this prediction, we examined activity in β and δ areas for all choices involving the opportunity for a reward today ($d = 0$) to ensure some engagement of the β system. Figure 4 shows that our prediction is confirmed: δ areas were significantly more active than were β areas when participants chose the later option, whereas activity was comparable (with a trend toward greater β -system activity) when participants chose the earlier option.

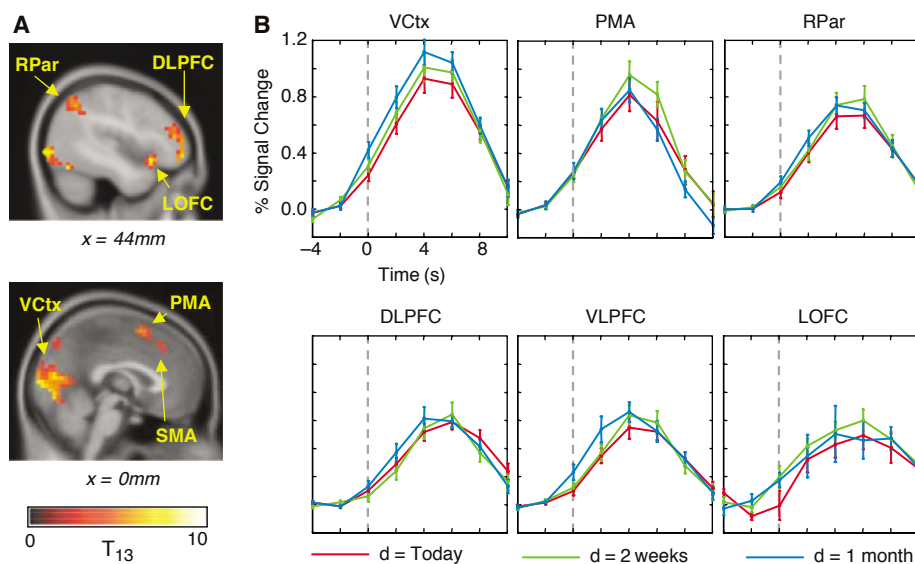


Fig. 2. Brain regions that are active while making choices independent of the delay (d) until the first available reward (δ areas). (A) A random effects general linear model analysis revealed eight regions that are uniformly activated by all decision epochs (at $P < 0.001$, uncorrected; five contiguous voxels). These areas include regions of visual cortex (VCtx), premotor area (PMA), and supplementary motor area (SMA). In addition, areas of the right and left intraparietal cortex (RPar, LPar), right dorsolateral prefrontal cortex (DLPFC), right ventrolateral prefrontal cortex (VLPFC), and right lateral orbitofrontal cortex (LOFC) are also activated (table S2). (B) Mean event-related time courses for δ areas (dashed line indicates the time of choice; error bars are SEM; $n = 14$ subjects). A three-way analysis of variance indicated that the brain regions identified by this analysis are differentially affected by delay (d) than are those regions identified in Fig. 1 ($P < 0.0001$).

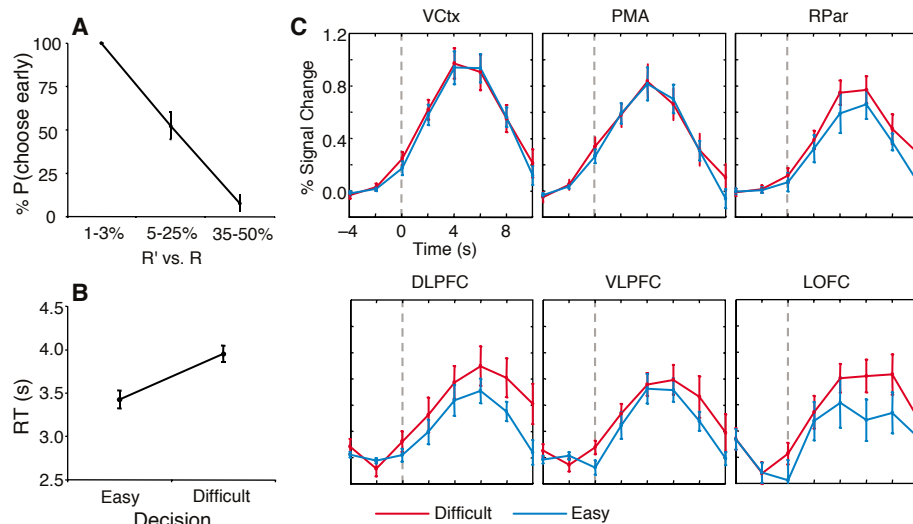


Fig. 3. Differences in brain activity while making easy versus difficult decisions separate δ areas associated with decision making from those associated with non-decision-related aspects of task performance. (A) Difficult decisions were defined as those for which the difference in dollar amounts was between 5% and 25%. (B) Response times (RT) were significantly longer for difficult choices than for easy choices ($P < 0.005$). (C) Difficult choices are associated with greater BOLD signal changes in the DLPFC, VLPFC, LOFC, and inferior parietal cortex (time by difficulty interaction significant at $P < 0.05$ for all areas).

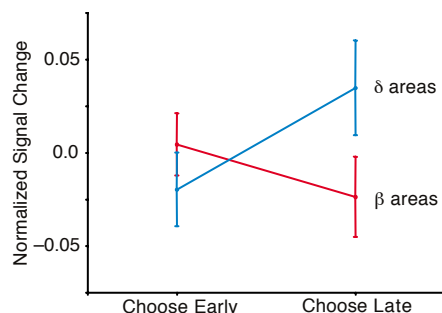


Fig. 4. Greater activity in δ than β areas is associated with the choice of later larger rewards. To assess overall activity among β and δ areas and to make appropriate comparisons, we first normalized the percent signal change (using a z-score correction) within each area and each subject, so that the contribution of each brain area was determined relative to its own range of signal variation. Normalized signal change scores were then averaged across areas and subjects separately for the β and δ areas (as identified in Figs. 1 and 2). The average change scores are plotted for each system and each choice outcome. Relative activity in β and δ brain regions correlates with subjects' choices for decisions involving money available today. There was a significant interaction between area and choice ($P < 0.005$), with δ areas showing greater activity when the choice was made for the later option.

In economics, intertemporal choice has long been recognized as a domain in which “the passions” can have large sway in affecting our choices (36). Our findings lend support to this intuition. Our analysis shows that the β areas, which are activated disproportionately when choices involve an op-

portunity for near-term reward, are associated with limbic and paralimbic cortical structures, known to be rich in dopaminergic innervation. These structures have consistently been implicated in impulsive behavior (37), and drug addiction is commonly thought to involve disturbances of dopaminergic neurotransmission in these systems (38).

Our results help to explain why many factors other than temporal proximity, such as the sight or smell or touch of a desired object, are associated with impulsive behavior. If impatient behavior is driven by limbic activation, it follows that any factor that produces such activation may have effects similar to that of immediacy (10). Thus, for example, heroin addicts temporally discount not only heroin but also money more steeply when they are in a drug-craving state (immediately before receiving treatment with an opioid agonist) than when they are not in a drug-craving state (immediately after treatment) (39). Immediacy, it seems, may be only one of many factors that, by producing limbic activation, engenders impatience. An important question for future research will be to consider how the steep discounting exhibited by limbic structures in our study of intertemporal preferences relates to the involvement of these structures (and the striatum in particular) in other time-processing tasks, such as interval timing (40) and temporal discounting in reinforcement learning paradigms (41).

Our analysis shows that the δ areas, which are activated uniformly during all decision epochs, are associated with lateral prefrontal and parietal areas commonly impli-

cated in higher level deliberative processes and cognitive control, including numerical computation (34). Such processes are likely to be engaged by the quantitative analysis of economic options and the valuation of future opportunities for reward. The degree of engagement of the δ areas predicts deferral of gratification, consistent with a key role in future planning (32, 33, 42).

More generally, our present results converge with those of a series of recent imaging studies that have examined the role of limbic structures in valuation and decision making (26, 43, 44) and interactions between prefrontal cortex and limbic mechanisms in a variety of behavioral contexts, ranging from economic and moral decision making to more visceral responses, such as pain and disgust (45–48). Collectively, these studies suggest that human behavior is often governed by a competition between lower level, automatic processes that may reflect evolutionary adaptations to particular environments, and the more recently evolved, uniquely human capacity for abstract, domain-general reasoning and future planning. Within the domain of intertemporal choice, the idiosyncrasies of human preferences seem to reflect a competition between the impetuous limbic grasshopper and the provident prefrontal ant within each of us.

References and Notes

1. G. Ainslie, *Psychol. Bull.* **82**, 463 (1975).
2. S. Frederick, G. Loewenstein, T. O'Donoghue, *J. Econ. Lit.* **40**, 351 (2002).
3. T. C. Koopmans, *Econometrica* **32**, 82 (1960).
4. G. Ainslie, *Picoeconomics* (Cambridge Univ. Press, Cambridge, 1992).
5. H. M. Shefrin, R. H. Thaler, *Econ. Inq.* **26**, 609 (1988).
6. R. Benabou, M. Pycia, *Econ. Lett.* **77**, 419 (2002).
7. R. J. Herrnstein, *The Matching Law: Papers in Psychology and Economics*, H. Rachlin, D. I. Laibson, Eds. (Harvard Univ. Press, Cambridge, MA, 1997).
8. H. Rachlin, *The Science of Self-Control* (Harvard Univ. Press, Cambridge, MA, 2000).
9. P. R. Montague, G. S. Berns, *Neuron* **36**, 265 (2002).
10. G. Loewenstein, *Org. Behav. Hum. Decis. Proc.* **65**, 272 (1996).
11. J. Metcalfe, W. Mischel, *Psychol. Rev.* **106**, 3 (1999).
12. H. Rachlin, *Judgment, Decision and Choice: A Cognitive/Behavioral Synthesis* (Freeman, New York, 1989), chap. 7.
13. J. H. Kagel, R. C. Battalio, L. Green, *Economic Choice Theory: An Experimental Analysis of Animal Behavior* (Cambridge Univ. Press, Cambridge, 1995).
14. M. Macmillan, *Brain Cogn.* **19**, 72 (1992).
15. A. Bechara, A. R. Damasio, H. Damasio, S. W. Anderson, *Cognition* **50**, 7 (1994).
16. D. Laibson, *Q. J. Econ.* **112**, 443 (1997).
17. G. Angeletos, D. Laibson, A. Repetto, J. Tobacman, S. Weinberg, *J. Econ. Perspect.* **15**, 47 (2001).
18. T. O'Donoghue, M. Rabin, *Am. Econ. Rev.* **89**, 103 (1999).
19. E. S. Phelps, R. A. Pollak, *Rev. Econ. Stud.* **35**, 185 (1968).
20. J. Elster, *Ulysses and the Sirens: Studies in Rationality and Irrationality* (Cambridge Univ. Press, Cambridge, 1979).
21. Materials and methods are available as supporting material on Science Online.
22. J. Olds, *Science* **127**, 315 (1958).
23. B. G. Hoebel, *Am. J. Clin. Nutr.* **42**, 1133 (1985).
24. W. Schultz, P. Dayan, P. R. Montague, *Science* **275**, 1593 (1997).

25. H. C. Breiter, B. R. Rosen, *Ann. N.Y. Acad. Sci.* **877**, 523 (1999).
26. B. Knutson, G. W. Fong, C. M. Adams, J. L. Varner, D. Hommer, *Neuroreport* **12**, 3683 (2001).
27. S. M. McClure, G. S. Berns, P. R. Montague, *Neuron* **38**, 339 (2003).
28. Our analysis also identified a region in the dorsal hippocampus as responding preferentially in the $d = \text{today}$ condition. However, the mean event-related response in these voxels was qualitatively different from that in the other regions identified by the β analysis (fig. S2). To confirm this, for each area we conducted paired t tests comparing $d = \text{today}$ with $d = 2$ weeks and $d = 1$ month at each time point after the time of choice. All areas showed at least two time points at which activity was significantly greater for $d = \text{today}$ ($P < 0.01$; Bonferroni correction for five comparisons) except the hippocampus, which, by contrast, is not significant for any individual time point. For these reasons, we do not include this region in further analyses. Results are available in (27) (fig. S2).
29. One possible explanation for increased activity associated with choice sets that contain immediate rewards is that the discounted value for these choice sets is higher than the discounted value of choice sets that contain only delayed rewards. To rule out this possibility, we estimated discounted value for each choice as the maximum discounted value among the two options. We made the simplifying assumption that subjects maintain a constant weekly discount rate and estimated this value based on expressed preferences (best-fitting value was 7.5% discount rate per week). We then regressed out effects of value from our data with two separate mechanisms. First, we included value as a separate control variable in our baseline GLM model and tested for β and δ effects. Second, we performed a hierarchical analysis in which the effect of value was estimated in a first-stage GLM; this source of variation was then partialled out of the data and the residual data was used to identify β and δ regions in a second-stage GLM. Both of these procedures indicate that value has minimal effects on our results, with all areas of activation remaining significant at $P < 0.001$, uncorrected.
30. Difficulty was assessed by appealing to the variance in preferences indicated by participants. In particular, when the percent difference between dollar amounts of the options in each choice pair was 1% or 3%, subjects invariably opted for the earlier reward, and when the percent difference was 35% or 50%, subjects always selected the later, larger amount. Given this consistency in results, we call these choices "easy." For all other differences, subjects show large variability in preference, and we call these choices "difficult" (Fig. 3A). These designations are further justified by analyzing the mean response time for difficult and easy questions. Subjects required on average 3.95 s to respond to difficult questions and 3.42 s to respond to easy questions (Fig. 3B) ($P < 0.005$). We assume that these differences in response time reflect prolonged decision-making processes for the difficult choices. Based on these designations, we calculated mean blood oxygenation level—dependent (BOLD) responses for easy and difficult choices (Fig. 3C).
31. Because difficulty was associated with longer RT, it was necessary to rule out nonspecific (i.e., non-decision-related) effects of RT as a confound in producing our results. We performed analyses controlling for RT analogous to those performed for discounted value as described above (29). This is a conservative test because, as noted above (30), we hypothesize that at least some of the variance in RT was related to the decision-making processes of interest. Nevertheless, these analyses indicated that removing the effects of RT does not qualitatively affect our results.
32. E. K. Miller, J. D. Cohen, *Annu. Rev. Neurosci.* **24**, 167 (2001).
33. E. E. Smith, J. Jonides, *Science* **283**, 1657 (1999).
34. S. Dehaene, G. Dehaene-Lambertz, L. Cohen, *Trends Neurosci.* **21**, 355 (1998).
35. This prediction requires only that we assume that activity in each system reflects its overall engagement by the decision and, therefore, its contribution to the outcome. Specifically, it does not require that we assume that the level of activity in either system reflects the value assigned to a particular choice.
36. A. Smith, *Theory of Moral Sentiments* (A. Millar, A. Kinkaid, J. Bell, London and Edinburgh, 1759).
37. J. Biederman, S. V. Faraone, *J. Atten. Disord.* **6**, S1 (2002).
38. G. F. Koob, F. E. Bloom, *Science* **242**, 715 (1988).
39. L. A. Giordano et al., *Psychopharmacology (Berl.)* **163**, 174 (2002).
40. W. H. Meck, A. M. Benson, *Brain Cogn.* **48**, 195 (2002).
41. S. C. Tanaka et al., *Nature Rev. Neurosci.* **7**, 887 (2004).
42. Our results are also consistent with the hypothesis that the fronto-parietal system inhibits the impulse to choose more immediate rewards. However, this hypothesis does not easily account for the fact that this system is recruited even when both rewards are substantially delayed (e.g., 1 month versus 1 month and 2 weeks) and the existence of an impulsive response seems unlikely. Therefore, we favor the hypothesis that fronto-parietal regions may project future benefits (through abstract reasoning or possibly "simulation" with imagery), providing top-down support for responses that favor greater long-term reward and allowing them to compete effectively with limbically mediated responses when these are present.
43. I. Aharon et al., *Neuron* **32**, 537 (2001).
44. B. Seymour et al., *Nature* **429**, 664 (2004).
45. J. D. Greene, R. B. Sommerville, L. E. Nystrom, J. M. Darley, J. D. Cohen, *Science* **293**, 2105 (2001).
46. A. G. Sanfey, J. K. Rilling, J. A. Aronson, L. E. Nystrom, J. D. Cohen, *Science* **300**, 1755 (2003).
47. T. D. Wager et al., *Science* **303**, 1162 (2004).
48. K. N. Ochsner, S. A. Bunge, J. J. Gross, J. D. Gabrieli, *J. Cogn. Neurosci.* **14**, 1215 (2002).
49. We thank K. D'Ardenne, L. Nystrom, and J. Lee for help with the experiment and J. Schooler for inspiring discussions in the early planning phases of this work. This work was supported by NIH grants MH132804 (J.D.C.), MH065214 (S.M.M.), National Institute on Aging grant AG05842 (D.I.L.), and NSF grant SES-0099025 (D.I.L.).

Supporting Online Material
www.sciencemag.org/cgi/content/full/306/5695/503/DC1
 Materials and Methods
 Figs. S1 and S2
 Tables S1 and S2
 References

1 June 2004; accepted 26 August 2004

Science

Functional Genomics Web Site

- Links to breaking news in genomics and biotech, from *Science*, *ScienceNOW*, and other sources.
- Exclusive online content reporting the latest developments in post-genomics.
- Pointers to classic papers, reviews, and new research, organized by categories relevant to the post-genomics world.
- *Science's* genome special issues.
- Collections of Web resources in genomics and post-genomics, including special pages on model organisms, educational resources, and genome maps.
- News, information, and links on the biotech business.

www.sciencegenomics.org